

MiningCSI

Local Economic Developments by Mines

Volume 37 • 2024



COBUS LOOTS

CHIEF EXECUTIVE OFFICER
PAN AFRICAN RESOURCES



ALSO IN THIS ISSUE:

TWO RIVERS PLATINUM – Continues to assist SMME's Through Their Enterprise Supplier Development

NDALAMO RESOURCES – On Environmental, Social and Governance (ESG)

MOTORING SECTION – Features Porsche Cayenne S Allrounder SUV That Delivers Sporty Drive

BELL EQUIPMENT – Bell And OVL Partnership Builds Strong Foundations

SIBANYE-STILLWATER – Celebrating A Decade of Shared Value

www.miningcsi.co.za

MiningCSI

Local Economic Developments by Mines

INAUGURAL

GOLF

CHALLENGE

08 February 2024



KING DAVID MOWBRAY GOLF CLUB, CAPE TOWN

AGENDA

10h00 : Registration Starts

11h30 : First Tee Off

18h00: Prize Giving

FORMAT

Fourball Alliance,
2 Scores to Count.

Fourball: R12,000.00

Closing date for bookings: 2 February 2024

To book your package, visit www.miningcsi.co.za

Scintiller Eco Holdings

For information and bookings please contact: Lerato Molefi lerato@miningcsi.co.za | +27 (72) 731-1836

WHO SHOULD ATTEND ?

- Mining SLP Managers
- HRD Managers
- Municipality Officials and Managers
- Municipality Councillors
- Procurement Managers
- Transformation Managers
- Traditional & Community Leaders
- Mine Union Representatives

SOME OF THESE TRAINING INCLUDES, BUT NOT LIMITED TO:

- SLP & LED Capacity Training
- Procurement and DMRE T Form
- Enterprise & Supplier Development Training
- Conflict Resolution
- LED Projects Implementation Processes
- Mining Charter 2018
- SMME and Skills Development
- Women in Mining
- SLP Two Language Policy
- SLP Financial Provision
- Mine Rehabilitation
- Stakeholder Engagements
- Project Management

SOCIAL & LABOUR PLAN (SLP) AND INTEGRATED DEVELOPMENT PLAN (IDP) TRAINING

Best ways for mines, municipalities and communities to collaborate.

Training Dates: 22-23 February 2024
Venue: Garden Court, Hatfield, Pretoria

TRAINING OF MINE SLP MANAGERS, MUNICIPAL OFFICIALS & COMMUNITY LEADERS

Com Consulting has expertise in training for Mining Management, Municipality Officials & Councillors, local community members and other affected stakeholders by mining operations. The training will equip both mines and municipal personnel to collaborate as required by the Mining Charter 2018 to benefit people and spur economic growth and development through mining activities.

It is very important for mine management to understand how municipalities IDP work, while it is critical for municipalities to understand SLP process. This is particularly urgent for all new municipal councillors within mining areas. Disruptions of mine operations by community unrests is mainly due to miscommunications and lack of engagements by all affected parties.

Com Consulting (Pty) Ltd is a BEE Level 1 Service Provider.

Attendants Certificates to be issued to all delegates.

YOUR EXPERT TRAINER - MOSES SIBIYA

He worked with President Cyril Ramaphosa during Shanduka days as Shanduka Group Transformation Manager at Shanduka Coal focusing on compiling SLP's for mining rights applications. Local Economic Development (LED) and Corporate Social Investments. Second Language SLP Translation/Draft Required by Mining Charter 2018

Communicating with all government departments including the DMRE and engaged with Local Municipalities and Community Stakeholders. He has 20 years working experience in both private and public sector.

Future Training Dates: 22-23 Feb, 28-29 March, 25-26 April, 30-31 May, 27-28 June, 25-26 July, 29-30 August, 26-27 September, 24-25 October & 28-29 November.

BOOK YOUR SPACE FOR THIS TWO-DAY TRAINING

Contact Person:

Michelle Dondolo
Email: info@miningcsi.co.za
Tel: 073 446 9690

ComConsulting

www.miningcsi.co.za

It is good to be back and hope 2024 will be a great year for everyone. Investing in African Mining Indaba is reaching another important milestone as it celebrates three decades since establishment as a platform where mining industry from all over the world congregate on this global platform. We wish the event another 30 years of success, and we are looking forward to see you all in Cape Town on this prestigious event taking place on 5-8 February 2024.

Nelson Mandela once said, "that the son of a mine worker can become the head of the mine and that a child of farm workers can become the president of a great nation". The Mining CSI team is proud to say that, South Africa is indeed a great nation, well-endowed with huge mineral resources still waiting to be mined for decades to come. As an editor, am sure I am speaking for everyone in the country when I say, "we are proud to be South Africans as our country has made great strides in recent developments on the global stage".

During an interview with Department of Mineral Resources & Energy (DMRE) Minister, Gwede Mantashe at the launch of SLP project, the minister praised these mining companies: Impala Platinum, Sibanye-Stillwater, Exxaro and others for their meaningful SLP contributions to their respective communities. However, he said they can always do more to have sustainable prosperous communities living and working in harmony with mines.

The minister also called on mining companies to communicate and showcase their community projects, as that is one of the reasons communities usually clash with mines because they don't know or see what mines do in most cases which often leads to frustration by the communities.

Most of these social unrests and protests are done due to lack of knowledge of how SLPs and IDP's work especially in mining areas. Com Consulting (Pty) Ltd with the support of some mining companies has provided SLP and IDP Training for community

leaders both in Emalahleni (Mpumalanga Province) and West Rand (Gauteng Province), this came about as recommendations after the mine management and union members attended the training which is done monthly (see page 1 of this issue).

In each class there were 20 delegates from the communities in which the mines operate. Here is what some of the delegates said after the training:

"As one of the people that used to rile up community to protest and damage properties, I will now preach peace and dialogue to my community so we can engage mines constructively", said Thabo.

"We did not know that mines have to consult and assist our communities through SLP commitments when they operate in our areas, now our eyes have been opened and we would like to thank the mine for sponsoring this training so we could gain this important knowledge", remarked Thembi.

"Our communities lack knowledge and understanding which is why they go on the streets to protests, while our councilors are clueless about service delivery, we plead with mines to assist municipalities enroll councilors on this training", pleaded John.

Enjoy the read till next time! ♦

Moses Sibiya



In This Edition



Cover Picture: ©Pan African Resources

Published By: Sagis Data CSI Projects
PO Box 100365, Moreletapla, Pretoria 0167
Tel: +27 73 446 9690 • Fax: +27 86 240 8000
email: info@miningcsi.co.za • www.miningcsi.co.za

Managing Editor: Moses Sibiya – moses@miningcsi.co.za

Deputy Editor: Bainang Mpolokeng

Photography: Mining Companies & SAGIS

Design & Layout: Jackie van Niekerk

Magazine Consultant: Marvin Sewela

Advertising Sales: Michelle Dondolo

Research: Moses Sibiya

Distribution: Mining Companies, Minerals Council SA,
Presidency and DMRE Offices,
Selected Local Municipalities, GCIS,
Junior, Joburg and Mining Indaba

Marketing: Michelle Dondolo

Stakeholder Relations Executive: Leonard Mkansi

Mining CSI is published by SAGIS. Opinions expressed in this publication are not necessarily those of SAGIS or Mining CSI magazine. Information has been included in good faith by the publisher and is believed to be correct at the time of going to print. No responsibility can be accepted for errors and omissions. No material (articles or photographs) in this publication may be reproduced, in whole or in part, without specific written permission from the Editor. Copyright © 2024. All copyright for material appearing in this magazine belongs to SAGIS and/or the individual contributors. All rights reserved.

- 4 Pan African Resources ends 2023 With the Successful Handover of Community Projects and Contributions at Barberton Mines, Evander Gold Mine/elikhulu Tailings Retreatment and Mogale Tailings Retreatment Operations
- 6 Vahlengwe Mining Advisory & Consulting
- 8 Bell and OVL Partnership Builds Strong Foundations
- 10 Yende Community Welcomes Kangra's Social Projects
- 12 In celebration of Investing in African Mining Indaba's 30th Anniversary.
- 13 Generations Company Profile
- 14 Ndalamo Resources – ESG Contribution
- 16 Celebrating A Decade of Shared Value
- 18 Damara Masha A beneficiary of Two Rivers ESD Programme
- 19 M4 Foundation Article
- 20 Limpopo Earthmoving Construction Equipment (Pty) Ltd (LECE) launched in Limpopo Province
- 22 Medium-term Budget Sounds A Clear Warning About the State of South Africa's Public Finances
- 24 Mgodi Drilling Company Profile
- 25 Positive Growth Positions Adumo Payouts to Increase its Footprint in Mining in 2024
- 26 South Africa's Junior Minors are Rising up to the Challenge as Global Investment Destination.
- 27 Anglo American Platinum Commemorates World Aids Day With Donation of A Mobile Health Clinic to Eastern Cape Department of Health.
- 30 Motoring Section

MiningCSI

www.miningcsi.co.za



Pan African Resources ends 2023

With The Successful Handover Of Community Projects And Contributions At Barberton Mines, Evander Gold Mine/Elikhulu Tailings Retreatment And Mogale Tailings Retreatment Operations

Barberton Mines Handover of Phase Three of the Newly Constructed Sheba Primary School and upgrades the Ngwane Secondary School in Wards 43 and 41 – Barberton, Mpumalanga Province. Saturday the 28th of October 2023 was a ceremonial day for the entire community of Barberton and surrounding areas when the CEO of Pan African Resources, Mr. Cobus Loots and DMRE Deputy Minister Dr. Nobuhle Nkabane officially handed over the newly built Sheba Primary School at Sheba Siding and the upgraded Ngwane Secondary School to the Deputy Minister of Basic Education, Dr Reginah Mhaule, in a joint ceremony that started at Sheba Siding and ended in Ngwane Secondary School in New Village, Barberton.

Pan African Resources will also continue implementing additional community development initiatives that are not always part of the compliance requirements from the regulatory authorities and will work with all stakeholders to

meaningfully uplift the socio-economic conditions in Barberton's communities, by creating an enabling environment for the future leaders of the country through improved education opportunities and conducive learning environments.

Both schools are part of the local socio-economic development initiatives of Barberton Mines Social and Labour Plan (SLP) projects. Members of the community are requested to please take full ownership of both schools and guard against any form of vandalism, so that future generations can benefit from them for years to come.



Message from the CEO : Pan African CEO Cobus Loots motivates matric learners at Masupatsela Secondary School

Evander Gold Mine and Pan African Resources officially handed over newly built 'state of the art' science and computer laboratories to the Thistle Groove Combined School and Thomas Nhlabathi Secondary School in Embalenhle and Kinross on 16 November 2023.

The laboratories are fully equipped with computers and materials, with solar power backup. Mpumalanga Department of Education circuit managers Mr S. Molepo & Mr K. Masondo noted their appreciation of the laboratories and the impact they would have on the students.

Pan African CEO Cobus Loots addressed the students and stressed the importance of mining and its ongoing contribution to society, and how much more can be achieved with a sustainable mining industry.

The keynote address to the gathering, expressing the importance of quality education, was delivered by the Mpumalanga District Director, Mr P.P Magagula who was on hand for the symbolic handing over of the buildings and equipment.



Officials seated at the handover ceremony at Ngwane School in Barberton

Mogale Tailings Retreatment (MTR) Commence With Community Initiatives In Kagiso Ward 13 Mosupatsela And Mafaesa Secondary Schools

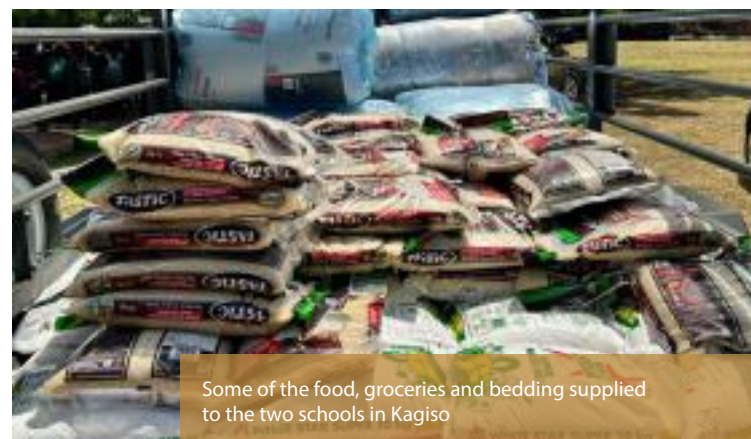
Even before finalisation of our Social and Labour Plan (SLP) commitments and in line with Pan African's beyond compliance approach to community development, the Company engaged with the Gauteng Department of Education and



ward councilors to identify schools in the Mogale City area needing immediate assistance. Engagement with officials in September 2023 resulted in a needs analysis for learners to increase matric pass rate and improve conditions for learning – over 3 500 learners impacted

MTR's initial contributions comprised:

- Over 100 desks and chairs to ease overcrowded classrooms
- Skip bins and wheelie bins to improve the environment and encourage recycling
- Mattresses and bedding for student matric camps to improve bachelor pass rate to over 90%
- Food, groceries and stipends for the duration of the learning camps
- Sanitary packs for female students requiring assistance



Some of the food, groceries and bedding supplied to the two schools in Kagiso

The handover was personally overseen on 22 October 2023 by Pan African CEO Cobus Loots and MTR operations manager Oriel Shikwambana, who addressed matric learners in person and encouraged them to do their best, as many career opportunities will open up in the area for qualified professionals once operations commence. ◆



VAHLENGWE MINING ADVISORY AND CONSULTING

About Us

A company founded in 2021 to provide independent and balanced advisory and consulting services to the mining industry including all stakeholders affected by mining operations to ensure inclusive growth in line with the objectives of the Mineral and Petroleum Resources Development Act (MPRDA).

Our pursuit is driven by commitment to deliver our promises to our clients by operating responsibly, executing with excellence, well informed and fair advisory and consulting services.

Providing solutions that are based on research and innovative ideas to take advantage of opportunities for sustainable growth within the mining industry.

The founder and CEO Mr Sunday Mabaso draws experience from 20 years of service in the Department of Mineral Resources and Energy in which for seven years he served as a Regional Manager (3 years in Northern Cape and 4 years in Gauteng).

The founder has acquired various qualifications in mining and including an MBA Degree from Milpark Business School, GDE: Mining Engineering and a Post Graduate Certificate: Climate Change and Energy Law from the University of Witwatersrand and a certificate in Energy Efficiency and Sustainability from the University of Cape Town, and a certificate in Mine Closure & Rehabilitation from University of Pretoria.

Vahleengwe consist of a team with qualifications in Mining, Geology, Environmental Sciences, Social development Studies, Information Technology, and other relevant fields governing the mining and minerals sector. The founder is a member of the ESG working group of the SAMCODES Standards Committee (SSC) and the Southern Institute of Mining and Metallurgy (SAIMM). The team is registered with EAPASA as Environmental Assessment Practitioners in terms of NEMA. Vahleengwe is a level 1 BEE business entity"



Our Strategic Services

Mining Charter

Advisory and training on Mining Charter compliance including employees and communities..

Environmental & Social Governance (ESG)

Advisory on ESG in line with international prescripts and best practices.

Cleaner Energy Transition

Advisory on cleaner energy transition and reduction of carbon footprint in mining operations and improve reliability of energy supply.

MPRDA and NEMA

Advisory on compliance with legal requirements in terms of the MPRDA, NEMA, NWA, and related legislations in the mining industry.

Small Scale and Artisanal Mining

Assistance to aspiring small scale and artisanal miners.

Annual reports

Statutory reports, Mining Charter reporting, Environmental and Carbon Tax reporting.

Applications

Mineral Rights.
Environmental Authorizations.
Waste Management Licenses.
Water Use Licenses.
Prospecting & Mining Closures.

Petroleum Applications

Retail and Wholesale Licences.
Transfer of Licences.
Environmental Authorizations for Petroleum Stations.

Inspections

Compliance inspections to assist mining houses stay compliant to avoid non-compliance orders.

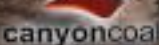
Mine Closure and Rehabilitation

Closure and Rehabilitation Plans.
SIA and EIA's for closure.
Rehabilitation and/or repurposing land for economic end-use.

Diamond and Precious Metals

Refinery Licences.
Export/Import Licences.
Trading Licences.
Certificates and Permits
Beneficiation Licences.
Dealer Licences.

Our Clients



011 432 0062



info@vahlengweadvisory.co.za



www.vahlengweadvisory.co.za



238 Vorster Avenue, Glenvista, Johannesburg South, Gauteng



Gary Bell shares a happy moment with Gogo Nana Aslina Kuhlase Mthimunya (72), one of the beneficiaries.

Bell and OVL Partnership Builds Strong Foundations

BELL

The Govan Mbeki Local Municipality has praised Bell Equipment Sales South Africa Ltd (BESSA) and the Overlooked Group (OVL) for collaborating to build four houses for indigent families in the Municipality's eMzinoni area, thereby reducing the housing backlog.

BESSA, the dealer network for Bell Equipment, South Africa's leading local manufacturer of mining and construction equipment contributed over R1 million in funding. This complemented BESSA's commitment to socio-economic advancement, given its customer base, which includes mining houses, emerging contractors, and various government spheres. OVL, a 100% black-owned company renowned for its expertise in housing projects, facilitated and provided project management expertise. Councillor Thandi Mtsweni, a Member of the Municipality's Mayoral Committee for Planning and Development, thanked OVL and BESSA for their commitment to socio-economic development.

Tiaan Swanepoel of OVL highlighted the holistic community approach, engaging local contractors, subcontractors, labourers, and suppliers, to amplify the project's impact on the ground. Gary Bell, Chairman of Bell Equipment Limited, emphasised the company's commitment to South Africa. With a team of 4 000 employees, Bell is deeply rooted in local production, fostering a network of about 1 250 local suppliers, and generating approximately 30 000 jobs through the

multiplier effect of their supply chain. Importantly, this partnership extends beyond housing, highlighting Bell Equipment and OVL's role in nation-building and socio-economic empowerment. Together they embody the spirit of unity and progress.



Bell Equipment Group Chairman, Gary Bell.

"Bell Equipment appreciates the opportunity to work together with the Overlooked Group and the Govan Mbeki Local Municipality to create change for the betterment of people in South Africa. This type of project fits in well with what we do around the country. We work in hundreds of different regions and have many such projects," said Mr Bell. ♦



72-year old Gogo Nana Aslina Kuhlase Mthimunya sits proudly and happily in her living room with the kitchen visible in the background



SAGWADI HOTEL

IDEAL FOR ALL EVENTS AND OFFERS:

- 14 LUXURIOUS AND PRIVATE EN-SUITE BEDROOMS
- SWIMMING POOL
- CONFERENCE FACILITIES FOR UP TO 90 DELEGATES
- COMFORTABLE LOUNGE AND BAR FACILITIES
- DSTV
- SECURE PARKING
(COVERED PARKING ON REQUEST)
- TEA/COFFEE - MAKING FACILITIES
- BREAKFAST
- TRANSFERS

SOUTH AFRICA

SAGWADI HOTEL IS AN AFFORDABLE AND LUXURIOUS ACCOMMODATION NESTLED AMIDST THE LOWVELD, NORTH EASTERN SIDE OF HAZYVIEW, MPUMALANGA PROVINCE

013 0101 780
061 532 8969

info@sagwadihotel.co.za
www.sagwadihotel.co.za

17a Hoxani Section, Calcutta D, Hazyview 1242

Follow us on:   



Yende Community Welcomes Kangra's Social Projects

A refurbished community hall, water supply and new houses for two families were among projects handed over to residents falling under the Yende Farmer's Trust during a celebration held on Saturday, 09 December.

The projects form part of the Kangra's Social and Labour Plan, and the mine's Corporate Social Investment scheme. The community hall upgrade and water project were made possible by an agreement between the Yende Trust and the mine.

Chairman of the Yende Farmer's Trust, Melusi Yende, described the handover of the community projects as an extension of the mine's positive impact in the area over and above the job opportunities it has created.

"The community is happy that Kangra has fulfilled its commitment. This is a good gesture," said Yende.

The mine invested in the upgrade of the old Twyfelhoek primary school building into the Yende Trust Community Hall, ensuring that the structure continues to be of good use to residents. The

building was upgraded with electric wiring, running water, furniture, and new fencing. Yende remarked that going forward the hall, will be a space for community members to run different activities.

Prior to the installation of water taps, Ntombeyningi Yende along with fellow residents relied on local springs and rivers for water.



“Having taps in our yards has changed our lives for the better because we used to walk long distance to fetch water,” Ntombeyningi said.

The taps were installed for all 30 households under the Yende Farmer’s Trust. This concluded the first phase of the water infrastructure project. The initiative will be rolled out in phases, until all eight farms in the area have been covered.



The Community Works Programme team will assist with the maintenance of the water infrastructure going forward. Additionally, two families whose homes were within the 500-metre buffer zone around Kangra’s Udumo Adit operations were successfully relocated to newly built houses.



The mine’s Sustainable Development Manager Mpfuneni Mulaudzi stated that all projects were initiated through consultation and planning involving the Yende Trust Committee and the Mkhondo Municipality.

“We are now seeing the positive results of the groundwork we have been laying to make sure that our communities benefit from the mining operations,” Mulaudzi said.



Kangra’s Engineering Manager Paul Redelinghuys said supporting community development is vital to the mine’s objectives.

“We are committed to uplifting our people and impacting the lives of communities surrounding our operations,” Redelinghuys said. ♦



In celebration of Investing in

African Mining Indaba's 30th anniversary, the content programmes will take on a new direction and purpose with the aim of marking this incredible milestone achievement with conversations and content delivery unlike ever before.



The 2024 theme: *"Embracing the power of positive disruption: A bold new future for African mining"* represents this objective. "It outlines the need for Africa's mining industry to embrace change in order to become a meaningful global competitor as key minerals are required to drive a sustainable future for the planet", says Laura Cornish.

2024 offers the opportunity to be bold and daring and to shift the conversation, and this year only represents the start of this new journey. Mining Indaba consists of five days (including Ministerial Symposium on Sunday) where all strategic and influential stakeholders – including governments, private sector, investors and disruptive service providers – gather to network and exchange ideas that will propel their businesses forward.

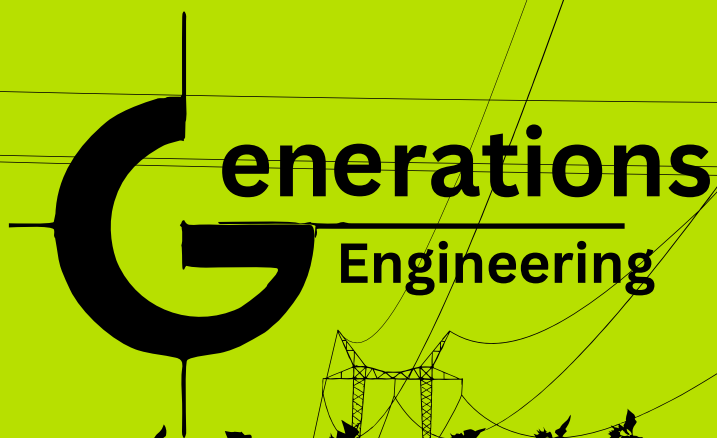
With numerous concurrent streams, the largest-ever conference programme will include the following:

- Presidential addresses (Angola President confirmed)
- The Ministerial symposium


- Intergovernmental Summit (3 day programme)
- Disruptive discussions (3 day programme)
- Sustainability Series (2 day programme)
- Investor Series (3 day programme of investor specific content)
- Technology and Innovation Hub (2 day programme)
- Junior Miners (1 day programme)
- Industry Intel (3 day programme)
- Young Leaders Programme (1 day programme)
- GC Forum (1 day programme)

About the Investing in African Mining Indaba


Investing in African Mining Indaba is the largest mining investment event in Africa. With a proven track record of bringing together Ministers, senior Government representatives, Mining Companies, Mid and Junior Miners, Investors, professional services as well as mining equipment and service providers, Mining Indaba is the place to meet everybody who's anybody in the African and global mining industry. ◆




Pana Xhalabile
CEO of Generations

 +27 71 133 6220/ +27 67 750 2466

 info@generationsengineering.co.za

 www.generationsengineering.co.za

 8 Vaalbos Str, Protea Park Ext 1, Rustenburg, 0299

About Generations Engineering

Generations Engineering has a wide range of expertise that has allowed us to be involved in multiple projects in the factories, commercial & mining industries. Our expertise range from Electrical Engineering, Mechanical Engineering, Operation, Project & Maintenance Management.

Generations Engineering has a combined experience of 15 years within the engineering space and is a Level 1 BBBEE rated company. We are ready to provide a solution to your problem.

Our Services

- Condition Based Maintenance
- Power Factor Correction & Energy Monitoring
- Generator Services
- Electrical Certificate of Compliance
- Turnkey Electrical Projects
- Electrical Upgrades & Modifications
- Electrical Motors & Drives
- Industrial Supplies



Ndalamo Resources – ESG Contribution

In a groundbreaking stride, Ndalamo Resources (Ndalamo) (“Organisation”) is transforming the narrative in the Coal Mining industry, emerging as a trailblazer in the Environmental, Social, and Governance (ESG) sphere. The Organisation is not merely challenging industry norms; it is redefining them by intricately weaving a balance between People, Purpose, and Progress throughout its business operations, all while upholding the mantle of a responsible corporate citizen.

At the helm of this visionary journey is CEO Mr. Shammy Luvhengo, ably supported by Corporate Affairs Executive Ms. Minah Moabi and Chief Financial Officer Ms. Mpho Nkhumeleni. Together, this leadership trio spearheads Ndalamo’s mission to revolutionize perceptions surrounding its core business.

The company is forging a path towards sustainability and ESG excellence, setting new benchmarks for corporate responsibility and redefining the role of a forward-thinking industry leader. Ndalamo is not just mining coal; it is mining a future where success is measured not only in profits but in the positive impact it leaves on the world. Ndalamo completed its inaugural ESG report in 2023 and makes a bold commitment of embracing sustainability principles based on the need for cleaner and more sustainable mining

practices. The company has committed to the following key environmental goals going forward (not limited to):

- Become net zero by 2050;
- Increase the use of renewable energy sources across the Organisation;
- Reduce the consumption of clean water across the Organisation;
- Provide communities with opportunities to access clean water;
- Restore land to its previous land use while working in partnerships to utilise the land to benefit both the community and the environment;
- Achieve a net positive gain in biodiversity by 2040 at all its operations.

In a bold declaration of purpose, Ndalamo is unwaveringly dedicated to catalysing a significant improvement in the socio-economic landscape of its mining host communities. The Organisation has elevated its commitment beyond rhetoric, actively engaging in transformative initiatives that transcend mere financial gains. In a resounding testament to its dedication, Ndalamo allocated over R47.7 million in 2022. These funds were strategically directed toward Enterprise Supplier Development (44%), underscoring a commitment to local businesses. Socio-Economic Development received a robust 18%, while Enterprise

Development and Skills Development each garnered 20% and 18%, respectively. This resolute allocation of resources speaks volumes about Ndalamo's impactful approach, creating a tangible difference in the communities it serves. Some of the initiatives include:

- Establishing short learning programmes for employees to equip them with everyday life skills.
- Funding a women's conference to assist in the fight against inequity and gender-based violence.
- Initiating an annual career guidance programme for Grade 12 students and funding their visits to Wits University as part of this initiative.
- Assisting in the establishment of a local community forum to improve communication and find solutions that benefit all stakeholders.
- Investing in the development of community housing and infrastructure, employing and upskilling local community members and SMMEs.
- Recruiting local individuals who completed training programmes.
- Conducting portable skills training to communities surrounding our operations, providing equipment to those who successfully completed their training, and investing in the skills development of the community.
- Donation of land to the Lethinhlanhla Development Cooperative.

In the dynamic realm of mining and business, Ndalamo stands as a beacon of strong governance, which serves as the bedrock of its operational ethos. A key driver in ensuring the company's enduring success lies in its strategic investment in governance mechanisms meticulously aligned with contemporary business models and industry best practices.

At the heart of Ndalamo's governance philosophy is a resolute commitment to accountability. This commitment emanates from the dedicated Board



ethically and responsibly. Upholding this ethos ensures that the organization not only meets but exceeds its commitments to stakeholders. The Ndalamo Board actively champions transparency throughout the Organisation, spanning from rigorous financial management to unwavering dedication to safety and environmental practices. This transparent approach is instrumental in fostering open and honest long-term relationships with all stakeholders, including valued investors.

However, Ndalamo doesn't merely rest on its laurels after achieving initial Environmental, Social, and Governance (ESG) goals. Instead, the company has set its sights on loftier ambitions, viewing sustainability, through the ESG lens, as an ongoing journey.

In the face of challenges, the Organisation remains resolute in its belief that sustained success lies in a continuous commitment to innovation and improvement. This strategic investment ensures Ndalamo's leadership in responsible mining practices, concurrently contributing to a better and more sustainable future for all. ◆



CELEBRATING A DECADE OF SHARED VALUE

Sibanye-Stillwater has, in the 10 years of its existence, contributed to economic growth and sustainable development of communities around our operations.

Our contribution is measured by the substantial societal change effected through our endeavours, including social upliftment and community development.



JS Skenjana Senior Secondary School,
Idutywa, Eastern Cape



Shearing sheds and support to small scale sheep
farmers in the Eastern Cape



Mfidikoe clinic, Rustenburg, North West



Blybank clinic, Merafong, Gauteng



Roads infrastructure development, Free State and North West



Hawker stalls, Rand West, Gauteng

Contributing to social infrastructure in communities around our operations

Through the strategic allocation of our resources and leveraging our expertise, we have focused our efforts on the following five key areas:



Education:

Sibanye-Stillwater has invested R2 billion towards education and remains dedicated to supporting educational initiatives by providing scholarships, investing in school infrastructure, and implementing mentorship programmes. This commitment ensures that the upcoming generation enjoys access to high-quality education opportunities.



Socio-economic and strategic partnerships:

Sibanye-Stillwater has established impactful strategic partnerships with local organisations and government bodies to tackle societal challenges and creating lasting socio-economic impacts with over R3.3 billion invested in socio-economic development projects.



Health:

Our commitment to improving healthcare includes investments in medical facilities, access to healthcare services, and health awareness campaigns in underserved areas.



Infrastructure:

The organisation has played a pivotal role in contributing to the development of critical infrastructure projects, creating job opportunities and improving the overall quality of life in the regions where we operate.



Agriculture:

Our support for the agricultural sector encompasses the promotion of sustainable farming practices, providing training for local farmers, and investing in agricultural technology to boost food security.

Looking to the future:

As we conclude a decade of shared value, Sibanye-Stillwater remains committed to making a positive contribution to the environment. Our efforts to reduce our carbon footprint, implement sustainable practices, and support environmental causes will continue to be a fundamental part of our mission.

In conclusion, Sibanye-Stillwater is immensely proud of its achievements over the past ten years, and we eagerly embrace the opportunities and challenges that lie ahead. We extend our gratitude to our stakeholders, employees, and partners for their unwavering support.

For more information on our contribution, visit www.sibanyestillwater.com



School and sports field construction, Majakaneng, North West



Lefaragatlha digital resource centre, Rustenburg, North West



Community health programme, North West



Mineworkers Development Agency (MDA) agri-hub partnership, North West





Damara Masha JV is a beneficiary of Two Rivers ESD Programme



The Director of Damara-Masha, Khomotso Makgoale Masha from Ga-Masha Village in Limpopo is determined to make a difference. He hopes to create employment opportunities that alleviate poverty for the community of Ga-Masha and the surrounding villages within the Sekhukhune District Municipality.

His company which was founded in 2015 secured its first contract from Two Rivers Platinum (TRP), starting with 10 employees and gradually expanding to a workforce of 45. Damara-Masha currently holds a contract from Two Rivers and two contracts from Thaba-Chweu Local Municipality for waste removal work, spanning from 2022 to 2027. The second contract involves skip loader services in Graskop until 2028. TRP bought a waste removal truck and a skip loader so the company is able to do work.

There is also a huge opportunity to establish a privately-owned landfill, which has the potential to hire about 50 employees at any given period which will at least assist in job creation and poverty alleviation within our communities.

In the next 10 years I want to see my company owning a fleet of skip loaders and compactors with our own landfill site," he said. The 35-year-old credits TRP Enterprise Supplier Development Programme

(ESD) for its role in his company's success. "I don't have enough words to describe how TRP has assisted myself and my company. We are where we are today because of their help. We still have a very long road ahead as a company, as I employ mostly elderly people the same age as my parents. All my employees are from Ga-Masha and it has been a long journey to get to where we are. It is a challenging task but we are continuously looking for more jobs in other mines," he said.



Khomotso Masha, Director of Damara Masha JV

"When my company grows, I want to build a library for my community because there is no library where I come from. With books, our communities and especially the youth can acquire knowledge which will be more sustainable for their future, we would like to also appeal to the mines in our areas to train our people with basic skills and knowledge of mining benefits," he said. ♦



Contact Details: Tel: 079 737 7754 - Email: khomomasha@yahoo.com



M4 FOUNDATION

For Mining Communities

CONTACT DETAILS:

Aloe Ridge, 1150 Cypras Street,
Burgersfort, Limpopo
38 Augrabies Street, Mooikloof, Pretoria
Tel: 079 690 1584
Email: info@m4foundation.co.za
Website: www.m4foundation.co.za

Since the first inception of the Young Women's Dialogue that was held in Atteridgeville on the 26th February 2020, the M4 Foundation has held 28 dialogues where a total of 4 455 pre-teenage and teenage girls from Atteridgeville, Olivenhoutbosch and Soweto have benefited from this project.

In every dialogue, a pack or two (depending on available stock) of re-usable sanitary pads is donated to all participants. Furthermore, The Foundation also offers re-usable sanitary pads (sanitary pads made using different cloths) to those who need them. However, it is mostly the girls who live in the rural areas where local shops are more than 5 kilometres away who often ask for the re-usable sanitary pads.

In addition to the Young Women's Dialogues, the M4 Foundation now supports 5 single mothers, of whom 2 have children with disabilities living in the informal settlements of Mshengu (Atteridgeville)

and Spruit (Mooiplaas) who are now micro-businesses owners who sell good quality used clothes in their local communities to generate income. There are also 2 women who are employed on a temporary basis. These women sew re-usable sanitary pads and sanitary pouches. However, none of these would have been possible without the generous donations from Clothes to Good, a textile recycling and disability empowerment organisation under the leadership of Jesse Naidoo and Tammy Greyling.

The Pretoria based organisation donates good quality used clothing to various organisations, including the M4 Foundation. Once every 2 months, the foundation sells the used clothes donated by Clothes to Good to locals at cheap prices. All the cash made from the sales is used to purchase disposable sanitary pads and material to make re-usable sanitary pads, all which are donated during the dialogues. ♦



On the 6th October 2023 the new venture, Limpopo Earthmoving Construction Equipment (Pty) Ltd (LECE) was launched in Limpopo Province by the key note speaker and guest of Honour, Minister Stella Ndabeni-Abrahams accompanied by some government officials and Limpopo Provincial representatives.

LECE was represented by the founders and business partners who own the business led by the Managing Director, Mr Brian GK Monetsi while Hitachi was represented by its MD and President, Mr Tetsuya Ozawa. The event was well attended by many business people, government officials, media and local delegates.

LECE is a certified sub-dealer for Hitachi Construction Machinery Southern Africa Co. (Pty) Ltd which is a leading provider of construction equipment solutions. The company is dedicated at providing both new and pre-owned Hitachi machinery sales, leasing, maintenance services and replacement parts to the clients whether they are in mining, construction or agriculture businesses. Our offering services include the following:

New Machine Sales

We are an authorized dealer of Hitachi Construction Machinery, providing a variety of new machines that are technologically advanced and built to deliver superior performance in various construction applications.

Used Machine Sales

We also offer a selection of reliable and well-maintained used construction equipment, providing cost-effective solution for our customers without compromising on quality.

Machine Rentals

LECE understand the need for flexibility in construction projects. Therefore, we offer machine rental services, allowing our clients to access the required equipment on a short-term basis, saving them from the burden of long-term ownership.

Material Handling Machines

In addition to construction equipment, we specialize in material handling machines, ensuring efficient and safe handling of materials in various industries. ◆



Authorised Hitachi Construction Machinery
Southern Africa Co. (Pty) Ltd sub-dealer

HITACHI

Reliable Solutions



Contact Details

T: +27 (0)800 061 009

E: sales@lece.co.za

W: www.lece.co.za

1 Hyacinth Close, Polokwane, Limpopo, 0699

"Building the Future, One Earth Move at a Time"



MINERALS COUNCIL
SOUTH AFRICA

Medium-term Budget Sounds A Clear

Warning About The State Of South Africa's Public Finances

The Medium-Term Budget Statement (MTBS) laid bare the consequences of the failures of state-owned entities like Transnet and Eskom, which is negatively affecting the mining sector's profitability and government tax revenue.

In a stark illustration of this, the mining corporate tax take in the first half of 2023/24 is down by R24.6 billion, or 55.4%, relative to the same period a year earlier. This is an important factor in the R56.8 billion downward revision in gross government tax revenue compared to what was expected in the February budget.

The scale of the fiscal problem was further emphasised by the fact that, despite cuts to non-interest expenditure over the next two years of R85 billion and the signal of R15 billion worth of tax hikes in 2024/25, government debt is now expected to peak substantially higher at 77.5% of GDP compared to 73.6% forecasted in the February budget.

"These are necessary but insufficient steps to put South Africa's public finances on a more

sustainable path. The task is so large that even R85 billion worth of cuts are not making a dent. The solution is to grow the economy faster. It's the only sustainable solution we have. There is only so much that can be cut and there are risks to the economy by raising taxes," said Hugo Pienaar, the Minerals Council's new Chief Economist.

Given this worrying situation, the Minerals Council South Africa welcomed Minister Enoch Godongwana's realistic diagnosis of the structural constraints on the economy and the interventions in conjunction with the private sector as a key partner to address these bottlenecks.

Over the next three fiscal years, relative to the February 2023 budget forecast, government tax revenue is now expected to be R121.4 billion less. According to the MTBS, coal and iron ore exports forfeited because of rail and logistics operational failures could have added 1.3 percentage points to the current account balance in 2022, resulting in a current account surplus. The cost to the economy of rail inefficiencies last year is estimated at R411 billion. ◆

Easily accessible, centrally located and convenient accommodation in Mashifane Park, Burgersfort. We provide accommodation for weary travellers, business people and leisure guests alike. We have large rooms with superb amenities and en-suite bathrooms



Home Away from Home



What you can Expect

- Free and secure parking
- Free unlimited high speed internet (WiFi)
- TV with openview in every room
- Outdoor swimming pool
- Braai area
- Laundry services available with an extra fee
- Housekeeping available daily
- Shared lounge and TV area

FOR MORE INFO:
0827014317 / 0761280530
LANDLINE: 013 170 5625 & HOTLINE: 066 136 0353.

HONOLULU LIFESTYLE GUEST LODGE
375 Kgapane Street, Mashifane Park,
Burgersfort

MGODI DRILLING (PTY) LTD

ABOUT

Welcome to Mgodid Drilling (Pty) Ltd, a BEE Level 2 company with black women and youth ownership. With an extensive network of community partners, we are local almost everywhere.

As partners of one of the most renowned global GET manufacturers headquartered in the West, we where specifically created to supply and service the South African mining industry and expand world class expertise in drilling consumables to the local mining value chain.

This unique position allows us to provide you with top-quality products backed by OEM support and service while empowering black women and youth, meeting BEE requirements, and contributing to local procurement.

OUR LEADERSHIP



ADV. MTHO XULU

Executive Director

Adv. Mtho Xulu, a highly respected and accomplished businessman, leads Mgodid Drilling (Pty) Ltd as our Executive Director. With a track record of successful ventures, exceptional leadership, legal expertise, and an extensive business network, he guides our company toward industry excellence. Notably, Adv. Xulu serves as the esteemed President of the South African Chamber of Commerce and Industry.

WHY US

BEE Level 2, with black woman and youth empowerment.

Extensive local network ensures local procurement anywhere in South Africa.

Partners of a world leader ensures technical and service backup.

Bargaining power ensures you get the best possible pricing structure.

OFFERINGS

GET EQUIPMENT (Ground engagement tool)
DRILL RODS
RODS SUPPORT EQUIPMENT
SERVICES
CONSULTING
AND MORE...



Phone : 073 350 6236 | 013 591 4001

Email : admin@mgodidrilling.co.za | mthoxulu@gmail.com

Website: mgodidrilling.co.za



adumo

Many long-standing clients, spanning over a decade, continue to endorse Adumo Payouts with positive testimonials and referrals, underscoring the importance of understanding and addressing its clients' business needs. The company underwent a strategic rebranding 18 months ago, shifting from being perceived solely as a rewards and incentives business to positioning itself as a holistic payout solutions provider.

This move allowed it to craft specific use cases for different industries, significantly expanding its scope and opportunities. In terms of specific plans for 2024, Adumo Payouts aims to further expand its engagement in the mining industry, tapping into opportunities with mining houses, unions, and other stakeholders. The company plans to address the downstream supply industry in mining and explore solutions for greater transparency in fund flow for ESG initiatives. In addition, it will focus on junior miners, who are also faced with the need to drive safety and productivity incentives.

"Traditionally, mines tended to hand out grocery vouchers as an incentive. But what if it is the middle of the month and you need to pay school fees, or in fact you want to try and save money for the end of the year for other needs?" questions Mallaby. "It is always about making the employee feel appreciated and giving them a choice.

They become much more engaged at the end of the day, and it has a knock-on effect. Mineworkers are more empowered as we have increased their spending power. Increased production means the mining industry contributes more to economic growth. If the mining industry is doing well, as a result, service providers such as Adumo Payouts benefit as well," says Mallaby. ♦

Website: www.adumo.com/payouts

Positive Growth Positions

Adumo Payouts to Increase its Footprint in Mining in 2024

Despite ongoing challenges such as low consumer confidence and high inflation, Adumo Payouts saw robust growth in 2023. "We had a remarkably good year with some positive growth," says CEO Steve Mallaby, adding that diversification has been a key factor in the company's ongoing success.

"We reduce the risk on our side as there are a broad range of sectors we are involved with," explains Mallaby. The company serves industries ranging from FMCG to mining and motor manufacturing, strategically positioning itself to weather economic downturns.

Bottom-line growth has also been accelerated by a revaluation of the business and its processes prompted by the challenges faced during Covid-19. The company not only focused on improved efficiency but undertook a comprehensive review of how it ran its business, so it could adapt to evolving circumstances and better serve its customers.

A critical aspect is an unwavering commitment to customer service. "Our biggest differentiator is our ability to service our customers" says Mallaby.



South Africa's junior minors are rising up to the challenge as global investment destination.

By Ngokwethu News Agency

Opportunities and challenges in mining industry call for a focus on serving the unique needs and a voice for the junior mining sector in 2024, says JMCs Founding President Fred Arendse.

You'll be forgiven for thinking that the mining sector is facing its most difficult period following prolonged negative media coverage on the jobs bloodbath in the sector, including falling commodity prices, rolling power cuts and reduced exports as a result of the dysfunction at Transnet, worsened by local macroeconomic situation.

However, according to Fred Arendse, founding President of Junior Mining Council (JMC) and Chief Executive Officer (CEO) of SSC Group, the junior mining sector is recognized to be vital to the overall health of the South African mining industry, especially in keeping it alive and growing, yet remains underrepresented, and the current industry bodies cannot assist and service all the junior miners.

"In South Africa, the term junior mining takes on a wider meaning than in other jurisdictions and includes exploration companies as well as small to mid tier producers. The history we are writing includes developing and driving relevant programs of action that position the junior mining sector at the key center of economic growth and participation in South Africa," says Arendse.

Arendse bases this observation on the interaction at the JMC launch which took place at the Johannesburg Stock Exchange (JSE) on Tuesday, 12 September 2023. The launch marked the birth of the new voice for the previously marginalized junior mining sector.

"We need action in response to the challenges we face. The JMC is bringing about a focused approach tailored to the unique needs of its diverse members, ranging from artisanal miners to small mining companies, natural brickfields, stone quarries, mine suppliers, explorers, miners, contractors, and more. These companies are often underrepresented, leaving them without an appropriate voice or support for sustainable growth.



"The prevailing economic environment demands that miners position themselves to survive current challenges and build a portfolio for the future. It is not only junior miners who need to adapt but also the interface with the regulatory environment will need them to unite and speak in one voice, and be seen as investment options of the future," says Arendse.

In the face of shrinking reserves of certain minerals, it will be critical for the junior mining companies to have a body that will lobby and advocate for their interests.

Reflecting in his personal journey, Arendse says, "I have been part of the mining industry my whole life and our Group of companies – Siyakhula Sonke Empowerment Corporation (SSC) – and as a result, I am acutely aware of the challenges facing the junior mining industry," he says.

Returning to the launch, Arendse says "Although the JMC is my brainchild, it cannot be what it needs to be with myself and my team alone, for that reason we are in a drive to reach out to all potential new members to be part of this important journey."

At present, the current board comprises of himself, as a founder of SSC Group and a seasoned mining executive, Adv Thabo Mokoena, former Director General of the Department of Mineral Resources and the Department of Energy (DMRE), Jimmy Gama, seasoned labour representative and Martin Schermers, a seasoned financial and mining executive.

"One of our priorities will be to establish a dedicated Junior Mining Venture Capital Fund for the unique needs of our members, thus bringing out the entrepreneurial spirit in us," he says.



It is places like the Eastern Cape, which historically contributed through human capital to help us build an organisation that helps us to re-imagine mining to improve people's lives. The mobile clinic's offerings have been tailored to the realities that our people face, and to the enduring work of building thriving communities not only where we operate, but also where our people come from."

Eastern Cape member of the executive committee (MEC) for Health, Nomakhosazana Meth, welcomed the donation at the handover: "We have always maintained that partnerships and collaborations are essential to address healthcare needs in the province.

We are grateful to Anglo American Platinum for coming on board and lending a helping hand. This mobile clinic will assist us a great deal in reaching as many learners as possible as we strive to improve the quality of service, we offer to everyone, including the future leaders of our province".

The mobile clinic forms part of Anglo American Platinum's 2021 Covid Unrest and Rebuild programme , where funding of R400 million was donated to support the reset and rebuild of South Africa. ♦



Inside the Mobile Clinic

Anglo American Platinum commemorates World Aids Day with donation of a mobile health clinic to Eastern Cape Department of Health.

On the 1st December 2023, Anglo American Platinum handed over a mobile health clinic to the Eastern Cape government for use by the province's integrated school health team to take primary healthcare services closer to schools in the province. The mobile clinic, which is fitted with modern equipment, is valued at over R5 million.

The handover formed part of the province's World Aids Day commemoration under the global theme 'let communities lead', which is aimed at working towards ending AIDS in children by 2030. The mobile clinic is designed to provide a range of primary healthcare services such audiology, dentistry, and optometry. Yvonne Mfolo, Executive Head of Corporate Affairs and Sustainable Impact at Anglo American Platinum said:" This mobile clinic represents a culmination of our work to support communities in our labour-sending areas.



Mobile Clinic Handover

Com Consulting Can Assist

Com Consulting can assist with the development of Mega LED projects in the local municipal areas, funded by mining companies. The projects are in most instances incorporated in the existing project plans in the Integrated Development Plans for the various municipalities, as well as plans from the DMRE. These areas are based on mining company Social & Labour Plans.

OUR AREAS OF EXPERTISE:

- Mine Rehabilitation
- Social & Labour Plan Consultants
- Conflict Resolutions
- Project Management
- SLP and IDP Capacity Training
- Stakeholder Engagements
- Bridge Between Mines, Municipalities and Communities
- Local Enterprise & Supplier Development
- Mining Unrests Prevention Solutions
- Media Communications
- Second Language SLP Translation/Draft Required by Mining Charter 2018
- We provide Equipment and all Mining Services

CONTACT US:

Tel: +27 73 446 9690 • Email: info@miningcsi.co.za
P O Box 100365 Moreletapla 0167

Com Consulting



mineral resources
& energy

Department:
Mineral Resources and Energy
REPUBLIC OF SOUTH AFRICA

CONTACT LIST OF REGIONAL MANAGERS MINERAL REGULATION BRANCH

REGION	REGIONAL MANAGER	TELEPHONE	EMAIL ADDRESS
LIMPOPO	Azwihangwisi Mulaudzi	+27 15 258 4700	azwihangwisi.mulaudzi@dmre.gov.za
MPUMALANGA	Aubrey Tshivhandekano	+27 13 653 0500	aubrey.tshivhandekano@dmre.gov.za
NORTH WEST	Phumudzo Nethwadzi	+27 18 487 4300	phumudzo.nethwadzi@dmre.gov.za
GAUTENG	Siyabonga Vezi	+27 11 358 9774	siyabonga.vezi@dmre.gov.za
FREE STATE	Kalipa Kewuti	+27 57 391 1300	kalipa.kewuti@dmre.gov.za
NORTHERN CAPE	Ndlelenhle Zindela	+27 53 807 1700	ndlelenhle.zindela@dmre.gov.za
WESTERN CAPE	Pieter Swart	+27 21 427 1000	pieter.swart@dmre.gov.za
EASTERN CAPE	Brenda Ngebulana	+27 41 396 3954	brenda.ngebulana@dmre.gov.za
KWAZULU NATAL	Ntsundeni Ravhugoni	+27 31 335 9600	ntsundeni.ravhugoni@dmre.gov.za



info@sagislogistics.co.za



073 446 9690

CAR RENTAL SERVICES



SAGIS Logistics is a car logistics company specializing in facilitation of transportation for car rental and hiring in South Africa. Due to high demand of transportation services post covid-19 period, SAGIS Logistics was established to cater for the traveling market for social, business, tourism and economic travel needs.

SAGIS Logistics has partnerships with most car rental companies in South Africa, such as AVIS, Europcar, Hertz and Dollar Thrifty of which are all available throughout the country and all the airports.

TRANSPORT FACILITATION SERVICE

The company is able to provide vehicles with unlimited km in most cases due to wide range availability of vehicles from car rental companies which makes it easy and possible.



UNIQUE OFFERINGS

- No credit card required
- EFT Payment
- Cash Deposit
- Unlimited Kilometres
- All car groupings available
- Individuals, corporates & groups



Porsche Cayenne Feature

Article by, Willem van de Putte

TOUTED as the car that ostensibly saved Porsche and allowed them to continue making ridiculously fast sports cars by bringing to market a well-heeled SUV, the Cayenne has continued to evolve into one of their most popular cars. Having spent some time in the latest iteration of the Cayenne S coupe, it's not difficult to understand why.

There's been some fiddling with the exterior and interior, but the biggest smile has to come from the re-introduced V8 under the bonnet. It seems that Porsche has heard their customer base and dropped the previous V6 in favour of two more cylinders and also added two turbochargers to the 4.0-litre mill. It puts out 349kW and 600Nm of torque that's sent to all four wheels via an eight-speed automatic gearbox that should get you to 100km/h in five seconds.

That's the good stuff.

The exterior boasts more aggressive and prominently arched wings, Matrix LED headlights and a new bonnet while the rear features an updated apron with an integrated number plate holder and the tail lights are a three-dimensional design.

Apart from the powerplant, the interior has received a fairly significant upgrade as well. The driver is faced with a 12.3-inch curved digital instrument cluster as part of the Porsche Driver experience first seen in the Taycan, a push button stop/start and significantly the transmission selector is now situated in the dashboard next to the 12.3-inch infotainment screen fitted with Porsche Communication Management software, that's easy to use and has wireless Android Auto and Apple CarPlay. Gear selector now on the dash it allows for more storage compartments, mechanical air conditioning switches and a haptic volume controller. In typical Porsche fashion

fixtures, fittings and surfaces are premium and everything seems to have been thought out with the user in mind rather than haphazardly placed. Starting the V8 is enough to make your day with a hearty growl before it settles down to a pleasant burble.

The Cayenne S is equally at home cruising through the suburbs doing the daily chores and loading whatever is needed into 625-litres of boot space as it is chasing maximum speed in every gear. With a towing capacity of 3 500kg and a decent Off-Road mode setting, it's a very capable and comfortable all-rounder. Not that you're going to be playing silly buggers with a caravan or boat but unhitched in Sport or Sport+ mode it will provide you with many hours of fun when you decide to test the boundaries a little.

Our test unit was fitted with the optional adaptive air suspension which when driving and cornering hard belies the Cayenne's size and 2 160kg weight. The engineering and calibration of the chassis, 48-volt anti-roll bars, gearbox and engine modes is sublime as is the exhaust roar as it heads into the

red. It never feels as though things are likely to spin out of control when pressed hard into and out of corners with little body roll and when passing slower traffic, it shifts down effortlessly hunkers down and gets on with it.

Dial back the hooligan and back in Normal mode, the low-down torque of the V8 makes it a respectable everyday SUV again. Porsche claims consumption figures of 9.7l/100km which may seem a little enthusiastic because let's face it, no one buys a twin-turbo V8 because they're concerned about consumption but as a pointer we managed 12.9l/100km with a variety of driving conditions.

I thoroughly enjoyed my time behind the wheel of the Porsche Cayenne S and as an allrounder that delivers both a sporty drive and a comfortable every day car it hits the mark superbly. Also, there's always that Porsche keyring on the counter to give a little extra street credibility. It's priced at R2 125 000 and comes with a three-year/100 000km maintenance plan. ♦





Phillip Masha is A Proud Limpopo Farm Owner

Limpopo farm owner, Phillip Masha who grew up both in Katlehong, Gauteng and Ga-Masha Village said he has always been passionate about farming.

"I have always had an interest in farming. I started with small-scale farming and grew my experience from there. The farming industry is very important. I saw how other businesses encountered several challenges during the Covid-19 pandemic, with some even having to close."



Farming however played a vital part in supporting the people of South Africa during this very difficult time. I believe farming can be a sustainable business for our communities," he said.

With his farming business, Philip said he wants to set up mini container butcheries all over the villages where people already congregate to braai on what is known as "chisa-nyama" in the townships and

villages. Ga Masha is one of the surrounding communities in which Two Rivers Platinum (TRP) Mine operates. TRP believes in maintaining close and sustainable partnerships with all their communities. "To us, it is not only about mining precious resources but also investing in human gems like Mr Masha and promoting economic growth in our province.



Through our Enterprise and Supplier Development (ESD) programme we assisted Mr. Masha with farming tools and equipment as well as capital to ensure he can continue to farm sustainably" said Rebotile Kgaka Chief Buyer of Preferential Procurement.

Philip Masha is one of the beneficiaries of Two Rivers Platinum (TRP) Enterprise and Supplier Development (ESD) programme. ◆



ARM
SOUTH AFRICA

LYMPLAIS
FARM - BUSHBURN

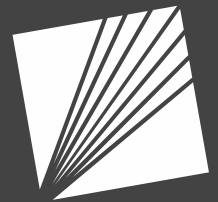
TWO RIVERS
PLATINUM

• *With* • **They are working ~~for~~ us.**

We work with more than 100 local suppliers
from areas surrounding our operations.



We support
entrepreneurship.



MENAR

Our Partners



Mining Conference Partners



CONTACT US:

Tel: +27 73 446 9690 • Email: info@miningcsi.co.za
P O Box 100365 Moreletaplaaza 0167

www.miningcsi.co.za